

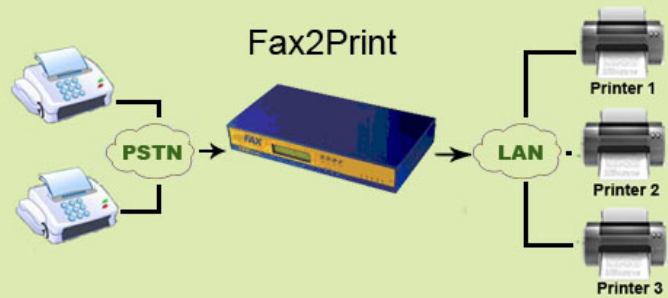
# Fax to Print

## myFAX Main Features



### Fax to Print

In this type of a solution, all incoming faxes will be printed out via network printing automatically. This function is similar to traditional fax machines, but you can use it freely as choose whether and when to enable it, reduce your paper costs.



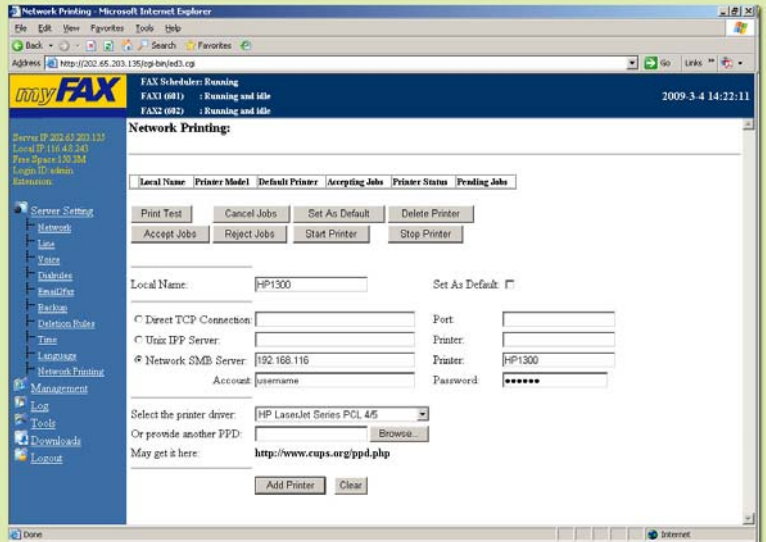
### Setup procedure:

1. Add printer. Login by admin input Local Name and select the connection option.
2. Select the printer driver.
3. Test Printer. Stop Printer. Delete Printer
4. Login myFAX, choose one added printer and enable Fax2Print.

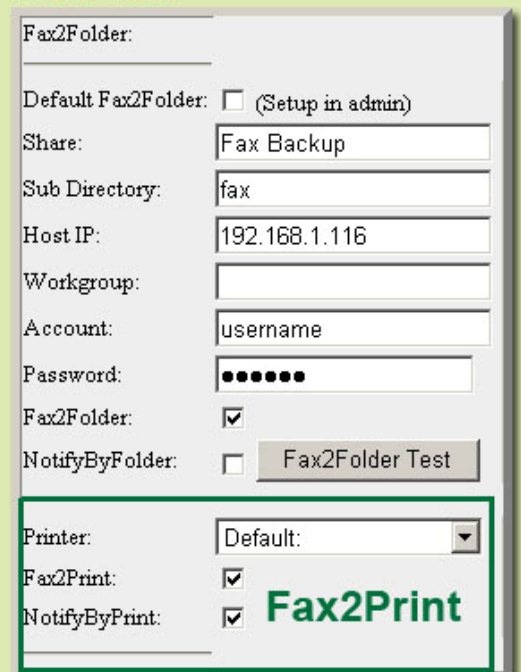
### Application:

- All printers are added by admin that ordinary users have no right to do it. When user wants to use Fax2Print, user just needs to enable this function under user's account setting.
- Faxes can be printed out by different department. User can specify the printed faxes to individual or the whole department. Also different department can choose different printer.
- There are three printer connection modes to choose:
  - Direct TCP Connection:** Select this connection way while you use the printer's own network share, and the default port is 9100
  - UnixIPP Server:** Base on IPP network print protocol, connect to printer via internet, home or office network
  - Network SMB Server:** General share method in Windows or Linux Samba

### Add Printer:



### Fax2Print:



### Features:

- ◆ myFAX can print out the fax after received, same as traditional fax printing.
- ◆ User can add more than one printer, when you enable Fax2Print you can use any printer as you added before.
- ◆ It supports to print out faxes as selected that eliminating the pile of paper around a shared printer.
- ◆ Incoming faxes will be printed out automatically after fax received, reduce labor costs.